

ARIZONA ANTELOPE FOUNDATION

I-17 Wildlife Overpass Fence Modification

August 8, 2026

Project Location: We will be working on the Coconino National Forest approximately 14 miles south of Flagstaff.

Project Begins: Saturday August 8th at 8:00AM. Meet at camp for specific work instructions, this is a 1-day project. The campsite is located within a couple of miles of the project site. **NOTE: If you are a first-time attendee, please go the following link and watch the 4 separate u-tubes on actual fence modifications:** <https://www.azantelope.org/Volunteer>

Project Activity: We will be modifying approximately 2.5 miles of fence in 2 locations by raising the 2 bottom wires up with the bottom wire spaced at 20 inches. The bottom wire is already a smooth wire. We will also be removing another failed fence segment in the nearby location.

Pronghorn Benefits: The project is located adjacent to I-17 in an area identified as a major crossing for both pronghorn and elk in the summer and going to lower elevations for winter range. Modifying these fences will allow easier access for pronghorn and elk nearing and physically crossing using a large planned I-17 overpass. This is our 3rd of several fence projects in this zone of the Coconino Forest. Long term goal of this interstate crossing project is to permit Pronghorn habitat connectivity across three forests: Coconino, Kaibab and Prescott National Forests.

Volunteer Benefits: All volunteer work hours and mileage will be used as an in-kind match for federally funded wildlife enhancement projects including the Arizona Game and Fish Habitat Partnership program.

What to Bring: Work gloves (The AAF will have a limited supply), snacks, water, sunscreen, personal gear.

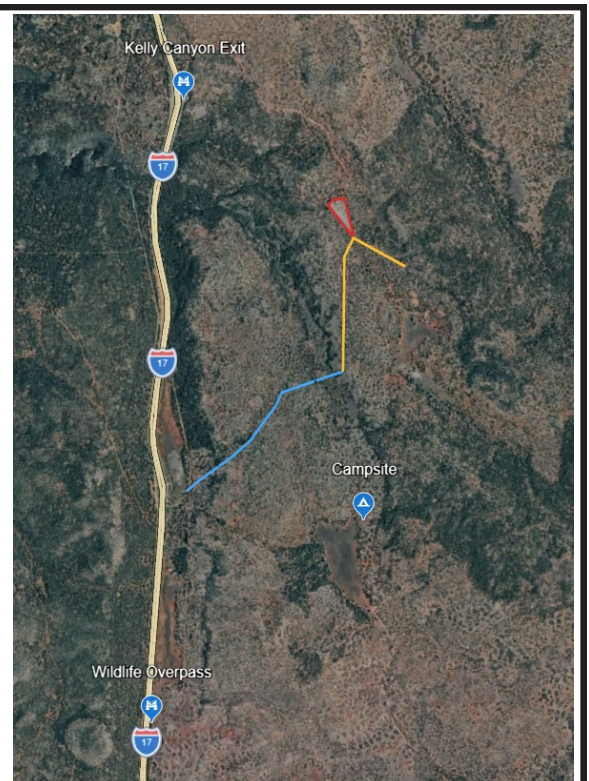
Meals: Please provide your own lunches to eat in the field on Saturday workdays. The AAF will be providing dinners on Friday and Saturday nights and continental breakfasts with coffee and juice on Saturday and Sunday mornings.

Camping Restrictions or Project Cancellation: If fires are permitted, we will know the weekend of the project. Also depending on wildfire activity, we may have to cancel the project and will email all those who have signed up. If fire restrictions are in place during this project, they would include no open fires and the use of charcoal.

Contact: Sign up online at https://volunteer.azgfd.gov/need/detail/?need_id=1281419 or call Dave Cagle (928-242-9871) or RSVP to info@azantelope.org. Please RSVP by Tuesday August 4th so we can plan to have enough food and tools for everyone.

DIRECTIONS TO CAMP ON INTERSTATE 17:

- ⇒ From Flagstaff travel approximately 10 miles south to Kelly Canyon Exit #331 and head east onto Forest Road 700H for about 0.5 miles then turn right onto FR 700. Continue South on FR 700 for 3 miles and the camp site will be on the right-hand side of the road at East Newman Park. The roads and campsite are trailer friendly.
- ⇒ From Camp Verde travel approximately 45 miles north to Mile Post #331 and follow the instructions above.





ARIZONA ANTELOPE FOUNDATION
P. O. BOX 1191
MESA, AZ 85211

NONPROFIT
ORG.
U.S. POSTAGE
PAID
Tucson, AZ
PERMIT NO. 690

ADDRESS SERVICE REQUESTED

You Are Invited!

Upcoming 2026 Activities

August 8th Flagstaff I-17 Unit 6A Fence Project

October 3rd TBD

Visit our website for more information

www.azantelope.org